



RANGE : 60 | 70 | 85 | 110 | 130 | 180 | 250 | 350 | 450 TON

PE Series

Hydraulic Servo Energy Saving
Injection Moulding Machine


engineering pvt. ltd.

About Us

Pingaxh engineering pvt. ltd. is located in ahmedabad (Gujarat, India). Our company is long engaged in the professional manufacture of high precision injection molding machine. We have successively introduced machine with clamping force from 50-650 tons.

Our company has a high qualified team who are specialized in the research and development as well as manufacturing engineering technology for all kinds of injection molding machine for long time. We have created lots of injection molding machine product proprietary technology and we have built up quick response output mechanism that can offer personalized solutions for our customer based on their requirements. With strong and powerful strength for the technology design and equipment manufacture our products design has integrated with advance technology as well as the ideas of keeping on improving, creation and transcendence.



Manufacture : High quality-High efficient- Precision-Energy saving products, is the aim of all person of Maruti Engineers



Design Reliable - Long service life - Modular User friendly, is the guideline of all designers of Maruti Engineers



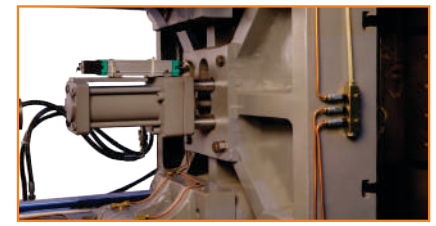
Marketing : Create value for customers - providing cost effective injection solution is the guideline of every salesman of Maruti Engineers



Service : Swift-Efficient-all-weather-service is the standard of every service personnel of Maruti Engineers

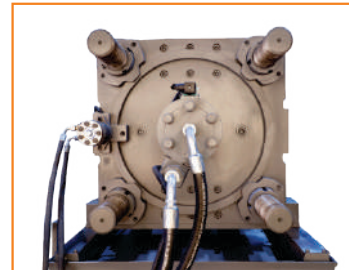
Why Us ?

- 1). Wide range of applications :** PE series injection molding machine is adaptive to all known injection process with powerful control system. It can be integrated seamlessly with various peripherals. The complete injection solution is suitable for special product process. So that the product can be widely applied.
- 2). Cost Effective :** PE Series injection molding machines are the products of the legacy design and high quality manufacture from own factory as well as the assembly in house.
- 3). Personalized :** the clamping injection and driving units can be combined in and optimized way according to the requirement of the customers to ensure high performance.
- 4). Highly repeatable :** PE Series injection molding machines can deliver superior injection and ensure repeated filling and consistent high quality injection, the screw position control function can ensure comparable injection accuracy as that of the fully automatic units.
- 5). Reliability :** PE series injection molding machines can ensure long term, high performance operation with components of superior quality. They are durable and require no frequent maintenance.

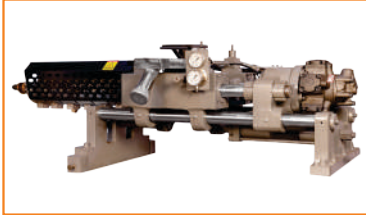


- 3 Multi Stage Ejection**
- Smooth & fast ejection
 - Easy access to ejector area

- 2 Robust & Rugged Toggle Mechanism**
- Toggle mechanism optimized for fast cycling & reduced platen deflection



- 1 Bull Gear Mechanism**
- Simple & accurate mold height adjustment for precise tonnage



- 5 Twin Cylinder Injection Unit**
- Strong and balanced twin cylinder injection unit distribute the load / pressure equally along the screw center line

- 4 Closed Loop PID Temperature Control**
- Provides precise temperature control

- 6 User Friendly Controller**
- Direct access menu keys
 - High speed microprocessor
 - Parameter entry in absolute value
 - Self diagnostic & fault finding capability
 - Graphical presentation of machine features



- 8 Servo Motor & Drive**
- Outstanding energy saving
 - Faster response towards hydraulic system
 - Excellent shot weight consistency
 - Reduced noise level



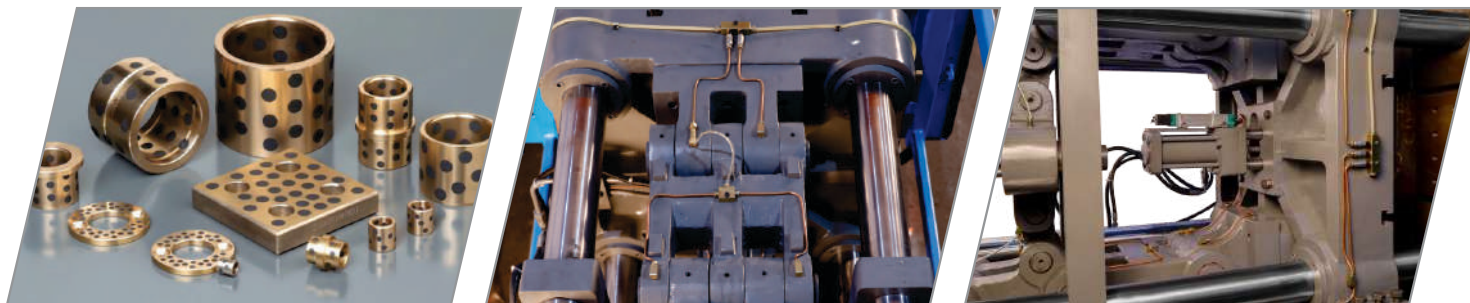
- 7 Skates for Platen Supports**
- Reduced platen deflection
 - Enhanced life of tie-bars
 - Higher mold carrying capacity



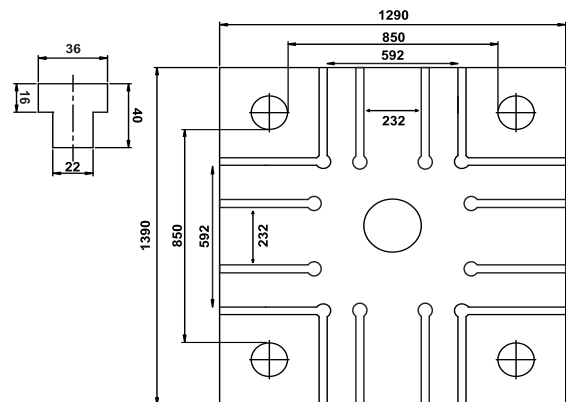
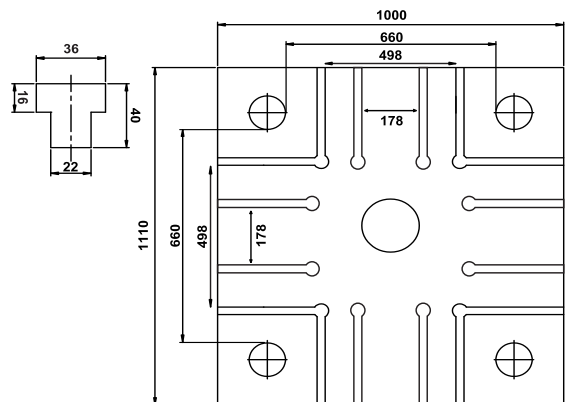
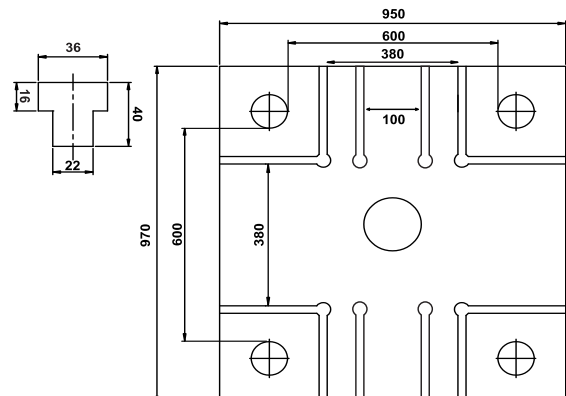
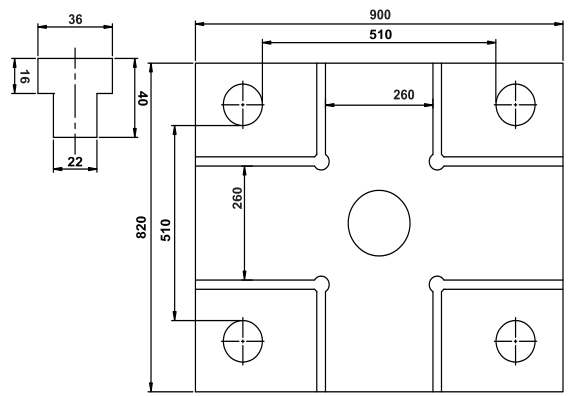
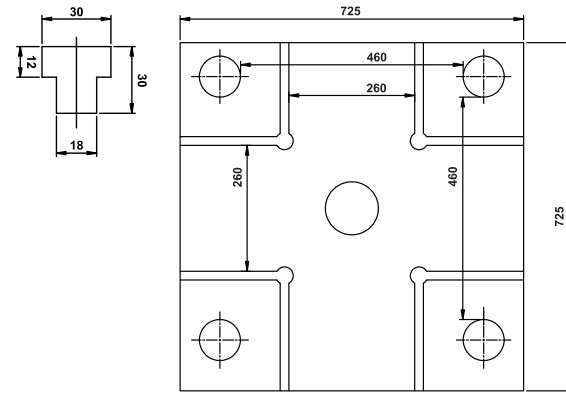
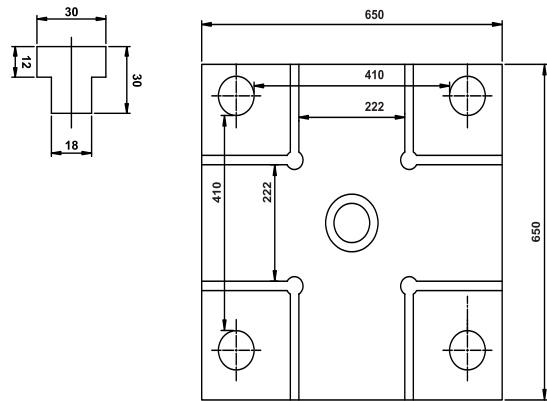
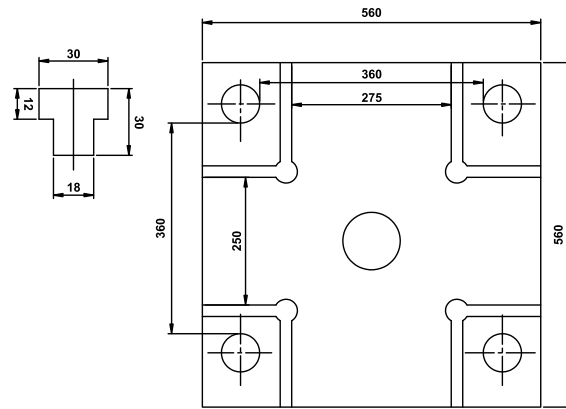
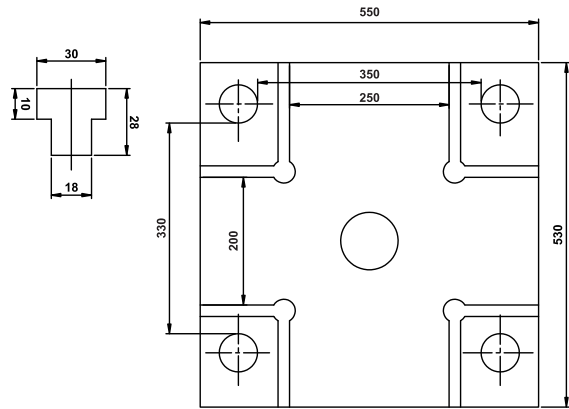
TECHNICAL SPECIFICATION

	Unit	60T		70T		85T		110T			130T			180T			250T			350T			450T		
		A	B	A	B	A	B	A	B	C	A	B	C	A	B	C	A	B	C	A	B	C	A	B	C
INJECTION UNIT																									
Short Weight	ps	85	100	100	120	120	140	160	195	245	225	300	330	425	480	570	500	600	700	900	1050	1280	1550	1750	1950
Screw Diameter	mm	30	35	30	35	35	40	35	40	45	40	45	50	45	50	55	50	55	60	65	70	75	75	80	85
Injection Pressure	bar	1960	1840	1930	1900	1930	1900	1950	1540	1180	1950	1540	1180	2160	1750	1440	2050	1690	1420	2050	1800	1550	1770	1560	1410
Injection Rate	cc/sec	60	66	66	68	75	80	79	103	130	106	134	165	137	169	204	176	213	254	229	265	303	412	470	517
L/D Ratio	L/D	21	20.6	20.6	19.5	20.6	19.5	21.9	19.2	17.1	20.6	18.3	16.5	22.2	20	18.2	22.5	20	18	22	20	19	21	20	19
Plasticizing Rate	gm/sec	7.5	9.5	11	12	12	13	14	17	23	15	24	34	19	25	29	25	28	36	45	55	45	45	50	58
Screw Stroke	mm	140		160		175		190			215			310			330			350			500		
Screw Speed	rpm	350		250		250		240			240			260			180			180			160		
Total Heating Capacity	Kw	5		6.5		6.5		7.2			8.5			11			13			25			30		
System Pressure	bar	150		150		150		160			160			175			175			175			175		
CLAMPING UNIT																									
Clamp Force	Ton	60		70		85		110			130			180			250			350			450		
Clamp Stroke	mm	210		250		280		330			380			490			590			680			900		
Max Day Light	mm	550		650		650		830			880			1000			1150			1450			1700		
Min Mould Height	mm	150		180		180		200			200			200			300			350			400		
Max Mould Height	mm	275		300		350		400			450			500			600			700			850		
Size of Mould Platen	mm	480 X 450		550 X 530		560 X 560		650 X 650			725 X 725			900 X 820			950 X 970			1000 X 1110			1290 X 1390		
Tie Bar Distance	mm	300 X 300		350 X 330		360 X 360		410 X 410			460 X 460			510 X 510			600 X 600			660 X 660			850 X 850		
Tie Bar Diameter	mm	55		60		65		80			85			95			100			120			130		
Locating Ring	mm	90		100		100		110			120			160			160			160			200		
Ejector Stroke	mm	60		75		75		100			125			150			200			200			250		
Ejector Force	Ton	2.1		2.5		2.5		3.9			4			5.5			6.5			12			13.5		
OTHERS																									
Total Connected Load	Kw	10.5		13.5		17.5		18.2			23.5			30			35			65			90		
Servo Motor	Kw	5.5		7.5		11		11			15			20			22.5			40			60		
Oil Capacity	ltr	150		190		210		230			260			350			400			550			600		
Machine Dimension (L x W X H)	meter	3.5 X 1.2 X 1.7		4 X 1.3 X 1.9		4.3 X 1.3 X 2		4.6 X 1.5 X 2			5.2 X 1.6 X 2.1			6.2 X 1.6 X 2.5			6.7 X 1.9 X 2.6			7.5 X 2.2 X 2.9			8.2 X 2 X 2.8		
Approx Machine Weight	Ton	2.7		3.2		3.7		4.5			5.3			7			8.5			15			25		
Hopper Capacity	lpm	20		25		30		30			30			50			50			50			60		

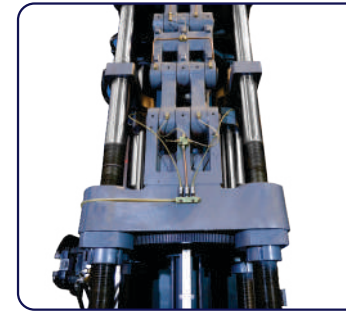
• Injection unit change as per requirements • Actual figures will modified depending on final machine configuration



PLATEN SIZE

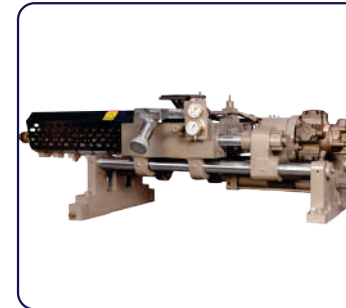


STANDARD CONFIGURATION OF ME SERIES



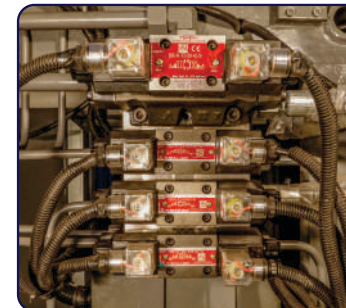
CLAMPING UNIT

- Patent of the five point outside mould clamping mechanism with big opening stroke
- Wide platen desing, can adapt to a larger size mould
- Low-pressure mould protect with high precision
- Hydraulic motor drive gear automatic mould high adjust mode
- Adjustable moving platen support structure, reduce the tie bar deformation
- Mechanical, electrical, hydraulic two/three safety protection devices
- Automatic safety door control (BL750EKII above)
- Open and close mold, ejection movement with high precision transducer control
- A variety of optional ejection patterns, pressure, speed setting respectively
- Five period of opening and closing mode speed and pressure can be adjusted
- Automatic detector volumetric centralized lubrication system



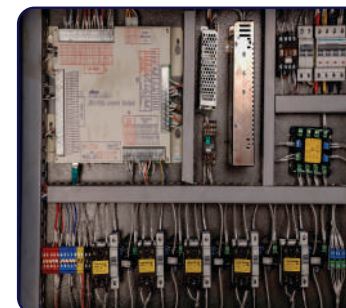
INJECTION UNIT

- High quality steel efficient plasticizing screw barrel
- Time delay setting for cold start on screw, timing heating, automatic heat preservation function
- High quality high torque hydraulic motor for plasticizing
- Twin injection cylinder design
- High rigid beam supporting structure
- Injection stroke control with precise transducer
- Six stages of injection, five stages of holding pressure, five stages of charging, pressure/speed can be adjusted
- Screw rotation speed detection
- "Auto Purge" function for cleaning the barrel



HYDRAULIC UNIT

- Servo energy-saving system
- Oil temperature deviation automatic alarm
- Motor overload protection function
- Core pulling device
- Quick insert mold cooling water (o 10)



ELECTRICAL CONTROL UNIT

- Process parameters of presetting function
- Have value reference and online operating instructions auxiliary function
- Simple robot interface
- Parameter data protection lock
- PID automatic temperature control, realizes the cylinder temperature self-correcting
- USB interface, easy backup panel application update and mould parameters save
- Have stop memory function, random con store 200 sets mould data
- 100 group of alarm and 100 groups of modification record
- Multi-level password settings to prevent the error revisign/changing unintentionally and the user could be freely authorized the qualifier to access the related password level as request
- Input and output point inspection and I/O online simulation function, and can confirm the machine status quickly

OPTIONAL AUXILIARY



Chiller



Cooling Tower

Auto Loader



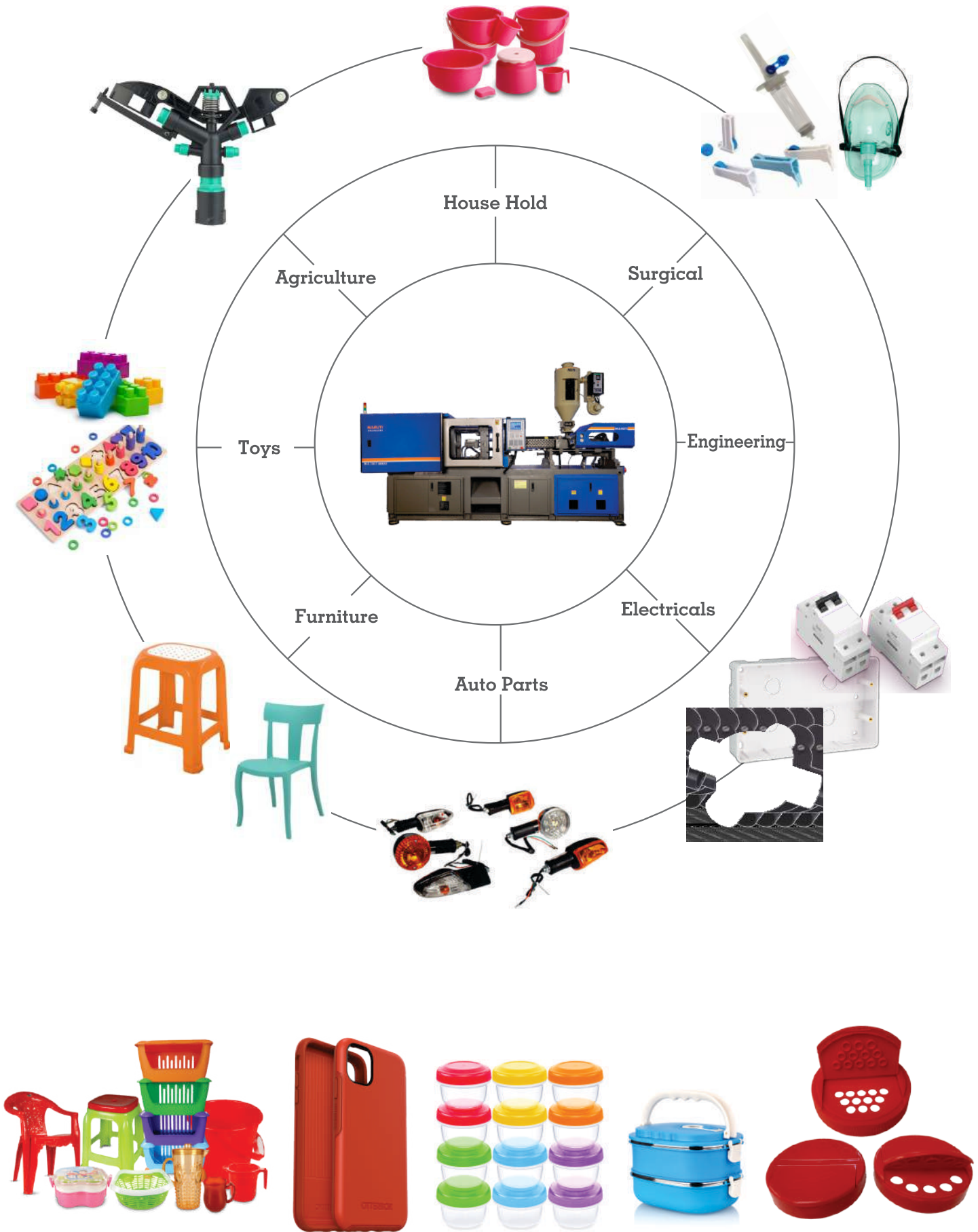
Hopper Dryer

Crusher



Robot

WIDE RANGE OF APPLICATION





*We persist in "quality is our life" and commit
ourselves to permanent sincerity*

PINGAXH ENGINEERING PVT LTD.

63 VISHAL 111 INDUSTREL ESTATE,
BEHIND GRAND VISHALAL ESTATE,
S. P. RING ROAD AHMEDABAD.PIN NO 382415

MO NO 9979397484

pingaxhengg@gmail.com